

UNIT SIZE & DIMENSIONS

CHARGE PER CALENDAR MONTH

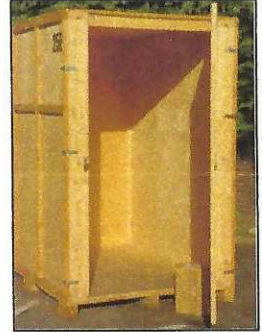
STANDARD UNIT

250 Cu Ft

£103.81

Height: 7'6" (228cm)
Depth: 7' (213cm)
Width: 5' (152cm)
(Internal measurement)

Inclusive of VAT
And liability up to a maximum of £2,500*



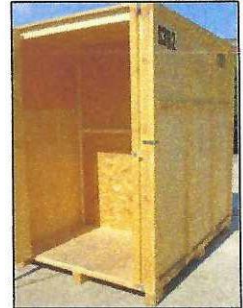
HALF DEPTH UNIT

125 Cu Ft

£69.47

Height: 7'6" (228cm)
Depth: 3'6" (106cm)
Width: 5' (152cm)
(Internal measurement)

Inclusive of VAT
And liability up to a maximum of £1,250*



HALF HEIGHT UNIT

120 Cu Ft

£61.61

Height: 3'5" (122cm)
Depth: 7' (213cm)
Width: 5' (152cm)
(Internal measurement)

Inclusive of VAT
And liability up to a maximum of £1,250*



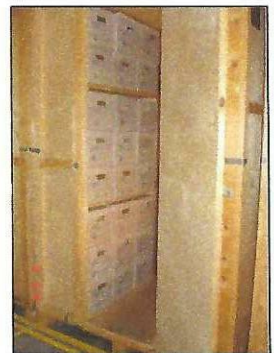
ARCHIVE DOCUMENTS AND STATIC STORAGE UNIT

250 Cu Ft

£109.04

Height: 7'6" (228cm)
Depth: 7' (213cm)
Width: 5' (152cm)
(Internal measurement)

Inclusive of VAT
And liability up to a maximum of £2,500*



ALL DIMENSIONS ARE APPROXIMATE

*The prices above include Standard Liability up to a maximum per unit as shown. If you would like us to accept liability over the maximum shown above (as separately advised by you) our price(s) will be increased to reflect the higher level of liability.